

Joseph Klein

**Against the gusts of blank repose,
a threshold that persists**

(2016/19)

for wind ensemble

To the memory of my son, Gabriel Paul Klein (1991-2015)

duration: c. 10'

Instrumentation

- | | | | |
|---|---|---|--|
| <ul style="list-style-type: none"> • piccolo • 2 flutes • 2 oboes • English horn • E\flat clarinet • 2 B\flat clarinets • B\flat bass clarinet • E\flat contra-alto clarinet* | <ul style="list-style-type: none"> • 2 bassoons • contrabassoon • B\flat soprano saxophone • E\flat alto saxophone • B\flat tenor saxophone • E\flat baritone saxophone | <ul style="list-style-type: none"> • A piccolo trumpet • 2 C trumpets • 4 F horns • 2 tenor trombones • bass trombone • euphonium • tuba | <ul style="list-style-type: none"> • contrabass • piano • harp • timpani • 5 percussion |
|---|---|---|--|

* Note: a B \flat contrabass clarinet part is also available, in lieu of the E \flat contra-alto clarinet.

Timpani: 4 drums (32", 30", 28", 25"), 2 cymbals (inverted and placed on timpani II & III). Striking implements: medium felt sticks, wood stick.

Percussion battery:

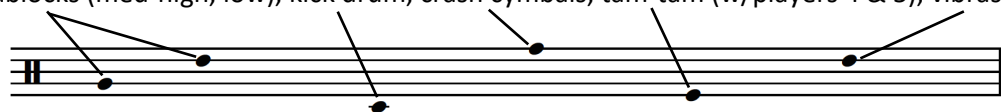
- Player 1: snare drum, bongo drums, 4 tom-toms, 2 woodblocks (high, med-low), triangle (w/player 4),



water gong (w/player 5), vibraslap (w/players 2 & 5).

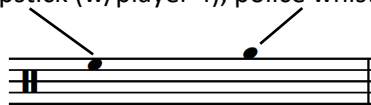
Striking implements: hard rubber mallets, medium yarn mallet, snare drum sticks, metal (triangle) beaters.

- Player 2: 2 woodblocks (med-high, low), kick drum, crash cymbals, tam-tam (w/players 4 & 5), vibraslap (w/players 1 & 5).



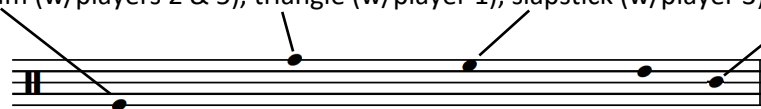
Striking implements: hard rubber mallets, tam-tam beater.

- Player 3: xylophone, glockenspiel, chimes, slapstick (w/player 4), police whistle (worn around neck).



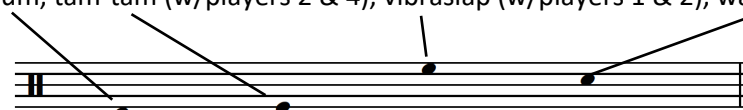
Striking implements: medium rubber mallets, hard rubber mallets, hard plastic mallets, chime hammers.

- Player 4: vibraphone, tam-tam (w/players 2 & 5), triangle (w/player 1), slapstick (w/player 3), ratchet.

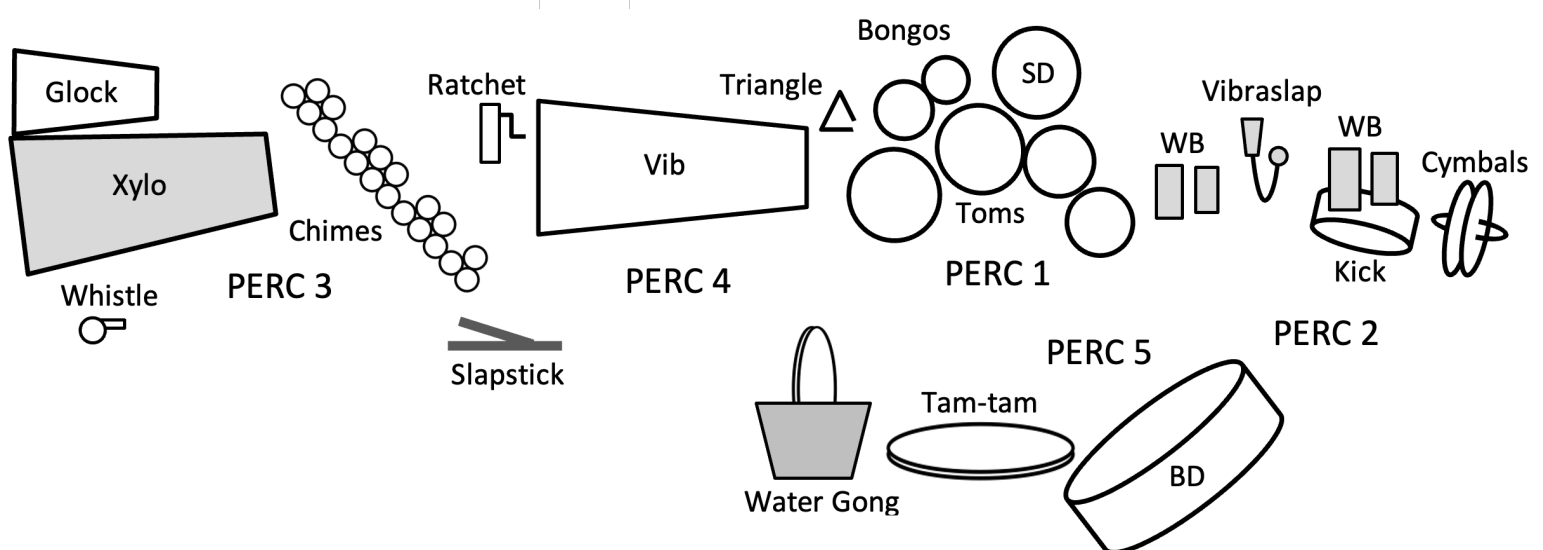


Striking implements: hard rubber mallets, hard yarn mallets, medium yarn mallets, bass bow, metal (triangle) beaters, tam-tam beater.

- Player 5: bass drum, tam-tam (w/players 2 & 4), vibraslap (w/players 1 & 2), water gong (w/player 1).





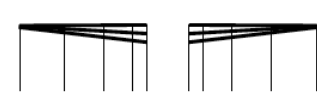
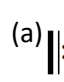



Striking implements: bass drum beater, tam-tam beater, medium yarn mallet.












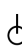


Performance Information

- This is a transposed score.
- Accidentals apply only to pitches they immediately precede, with the exception of repeated pitches.
- All horns require mutes. All trumpets require straight mutes; additionally, trumpets 2-3 require cup mutes. All trombones require straight mutes; additionally, tenor trombone 2 requires cup mute.
- The chimes and vibraphone require the pedal to be depressed at all times. It is recommended that a weight be used to depress the pedals on these instruments throughout.
- Harp harmonics sound an octave higher than written.

Performance Information (cont.)

-  durational continuum within *senza misura* section: values arranged from shortest to longest (precise durations *ad libitum*).
-  fermata continuum: arranged from shortest to longest.
-  accelerando/ritardando; duration indicated in metered sections.
- (a)  (b)  repeating mobiles: (a) ordered material; (b) unordered material.
- (a)  (b)  repeat material for the duration of the wavy line: (a) as written; (b) freely, *ad libitum*.

- | | | | |
|---|--|---|--|
|  | <i>senza misura</i> ; top number indicates the number of cues within the measure |  | pitch bend/glissando |
|  | cue (within <i>senza misura</i> sections) |  | rapid downward glissando (harp) |
|  | brief pause/break in sound |  | slow upward glissando (harp, piano) |
|  | fluttersongue/tremolo/roll/bisbigliando |  | silently depress all keys within range (piano) |
|  | let ring/blend into next section |  | dead stroke (percussion) |
|  | sneak entrance/blend with previous section |  | snap pizzicato (contrabass) |

Program Note

Against the gusts of blank repose, a threshold that persists is dedicated to the memory of my son, Gabriel Paul Klein, who took his life in September 2015 at the age of 23. The work's title is derived from two lines in Alice Fulton's poem "Silencer," from the collection *Powers of Congress* (1990)—a poem that itself deals with the subject of suicide—and is an allusion to the persistent struggle with that boundary between life and death ("blank repose").

The work is characterized by sharp juxtapositions of contrasting—often conflicting—musical elements, including sections of restless energy, obsessive ostinato figures, and intrusive interjections, occasionally relieved by stretches of placid, suspended music. The disjunct, fragmentary structure that results, combined with the inherently static, non-developmental nature of the material itself, is intended to subvert the typical linear narrative. An important unifying element of the work is the pitch cell G-A-B \flat -E, which is the basis of a repeating interval sequence used to generate the symmetrical, non-octave-repeating scale that is used pervasively throughout the work. This scale is most clearly presented in the ascending quasi-ostinato bass line that first occurs after the slow introductory section. Prime numbers and rhythmic patterns based on Morse Code are also used as unifying structural elements.

Against the gusts of blank repose, a threshold that persists was completed in September 2016 and first performed on 9 April 2026 at the University of North Texas by the UNT Wind Orchestra, conducted by Andrew Trachsel.

Against the gusts of blank repose, a threshold that persists

to the memory of my son, Gabriel Paul Klein (1991-2015)

for wind ensemble

Joseph Klein

2016/19

Transposed score

Anxious ♩ = 48; ♩ = 72

c. 25"

The score is for a wind ensemble and percussion. It features 22 staves for woodwinds and brass, 2 staves for piano and harp, and 5 staves for percussion. The woodwinds include Piccolo, Flute 1,2, Oboe 1,2, English Horn, Clarinet in Eb, Clarinet in Bb 1, Clarinet in Bb 2,3, Bass Clarinet in Bb, Contra-Alto Clarinet in Eb, Bassoon 1,2, Contrabassoon, Soprano Saxophone, Alto Saxophone, Tenor Saxophone, and Baritone Saxophone. The brass includes Piccolo Trumpet in A, Trumpet in C 2,3, Horn in F 1,3, Horn in F 2,4, Trombone 1,2, Bass Trombone, Euphonium, and Tuba. The piano and harp parts are in the lower register. The percussion part includes five staves with various instruments: Percussion 1 (Woodblocks w/hard rubber), Percussion 2 (Woodblocks w/hard rubber), Percussion 3 (Police Whistle, Slapstick), Percussion 4 (Ratchet), and Percussion 5 (Vibraslap). The score is marked with dynamics such as *ff*, *p*, *mp*, *mf*, and *sfz*. There are also performance instructions like "1. mute" and "1. pizz.". The score is divided into two systems, labeled 1 and 2 at the bottom.

This page of a musical score contains measures 37 through 44. The score is arranged in a system with multiple staves. The instruments listed on the left are: PC (Piccolo), FL 1,2 (Flutes), OB 1,2 (Oboes), EH (English Horn), Eb CL (E-flat Clarinet), CL 1 (Clarinet), CL 2,3 (Clarinets), BS CL (Bassoon), CA CL (Cassinet), BN 1,2 (Bassoons), CBN (Contrabassoon), S SX (Soprano Saxophone), A SX (Alto Saxophone), T SX (Tenor Saxophone), B SX (Baritone Saxophone), PC TP (Piccolo Trumpet), TP 2,3 (Trumpets), HN 1,3 (Horns), HN 2,4 (Horns), TN 1,2 (Trombones), B TN (Baritone Trombone), EUPH (Euphonium), TB (Tuba), CB (Cymbal), PF (Piano), HP (Harp), TIMP (Timpani), and PRC 1-5 (Percussion). The score includes various musical notations such as notes, rests, and dynamic markings like *f* (non troppo), *mp*, and *mp* (sim.). There are also tempo markings like *poco*. Large numbers (4, 3, 4, 5, 4) are placed above some staves, likely indicating measure counts or rehearsal marks. The percussion part (PRC 1-5) includes specific instructions for LO BONGO and SNARE.

This page of a musical score contains measures 51 through 56. The instrumentation includes:

- PC (Percussion)
- FL 1,2 (Flutes)
- OB 1,2 (Oboes)
- EH (English Horn)
- Eb CL (E-flat Clarinet)
- CL 1 (Clarinet 1)
- CL 2,3 (Clarinet 2 and 3)
- BS CL (Bass Clarinet)
- CA CL (Cello)
- BN 1,2 (Bassoon)
- CBN (Contrabassoon)
- S SX (Soprano Saxophone)
- A SX (Alto Saxophone)
- T SX (Tenor Saxophone)
- B SX (Baritone Saxophone)
- PC TP (Percussion/Trumpet)
- TP 2,3 (Trumpet)
- HN 1,3 (Horn)
- HN 2,4 (Horn)
- TN 1,2 (Trombone)
- B TN (Baritone Trombone)
- EUPH (Euphonium)
- TB (Tuba)
- CB (Cymbal)
- PF (Piano)
- HP (Harp)
- TIMP (Timpani)
- PRC 1-5 (Percussion/Drum)

The score features complex rhythmic patterns with frequent changes in time signature (5/8, 3/8, 4/8, 5/4) and dynamic markings such as *sfz*, *mp*, and *f*. The percussion section includes parts for Toms, Kick Drum, Bongos, Snare, and Lo Bongo. The harp part includes the instruction *D₁ C₁*. The page is numbered 51 through 56 at the bottom.

This page contains a musical score for measures 63 through 70. The score is arranged in a standard orchestral format with multiple staves for each instrument family. The instruments listed on the left are: PC (Piccolo), FL 1,2 (Flutes), OB 1,2 (Oboes), EH (English Horn), Eb CL (E-flat Clarinet), CL 1 (Clarinets), CL 2,3 (Clarinets), BS CL (Bassoon), CA CL (Cassinetto), BN 1,2 (Bassoons), CBN (Contrabassoon), S SX (Saxophones), A SX (Alto Saxophones), T SX (Tenor Saxophones), B SX (Baritone Saxophones), PC TP (Piccolo Trumpet), TP 2,3 (Trumpets), HN 1,3 (Horns), HN 2,4 (Horns), TN 1,2 (Trombones), B TN (Baritone Trombone), EUPH (Euphonium), TB (Tuba), CB (Cymbals), PF (Piano), HP (Harp), TIMP (Timpani), and PRC 1-5 (Percussion). The score includes various musical notations such as notes, rests, dynamics (e.g., *mf*, *f*, *ff*, *sfz*), articulation (e.g., *poco*, *sim.*), and performance instructions (e.g., *più f*, *non troppo*). Large numbers (3, 4, 5, 8) are placed at the beginning of several staves, likely indicating time signatures or rehearsal marks. The page is numbered 63 through 70 at the bottom.

Against the gusts of blank repose, a threshold that persists

This page of a musical score contains parts for the following instruments and sections:

- Woodwinds:** PC (Piccolo), FL 1,2 (Flutes), OB 1,2 (Oboes), EH (English Horn), Eb CL (E-flat Clarinet), CL 1 (Clarinets), CL 2,3 (Clarinets), BS CL (Bassoon), CA CL (Cassinet), BN 1,2 (Bassoons), CBN (Contrabassoon), S SX (Saxophones), A SX (Alto Saxophones), T SX (Tenor Saxophones), B SX (Baritone Saxophones).
- Brass:** PC TP (Piccolo Trumpet), TP 2,3 (Trumpets), HN 1,3 (Horn), HN 2,4 (Horn), TN 1,2 (Trombones), B TN (Baritone Trombone), EUPH (Euphonium), TB (Tuba), CB (Cymbals).
- Keyboard and Percussion:** PF (Piano), HP (Harp), TAMP (Tampour).
- Drum Set:** PRC 1 (Snare), PRC 2 (Crash Cymbals), PRC 3 (Xylophone w/hard plastic), PRC 4 (Triangle), PRC 5 (TAM TAM).

The score includes various musical notations such as dynamics (*ff*, *f*, *mf*, *ffz*, *sfz*, *p*, *mp*), articulation (*cresc.*, *poco*, *non troppo*), and performance instructions like *a2* and *più f*. Time signatures of 4/8 and 3/8 are used throughout the piece.

71 72 73 74 75 76 77 78 79

Against the gusts of blank repose, a threshold that persists

F Suspended $\text{♩} = 40$

PC
FL 1,2
OB 1,2
EH
Eb CL
CL 1
CL 2,3
BS CL
CA CL
BN 1,2
CBN
SX
A SX
T SX
B SX
PC TP
TP 2,3
HN 1,3
HN 2,4
TN 1,2
B TN
EUPH
TB
CB
PF
HP
TIMP
PRC 1
PRC 2
PRC 3
PRC 4
PRC 5

80 81 82 83 84

This page contains a musical score for measures 101 through 106. The score is arranged in a standard orchestral format with multiple staves for each instrument family. The instruments listed on the left include:

- PC (Percussion)
- FL 1,2 (Flutes)
- OB 1,2 (Oboes)
- EH (English Horn)
- Eb CL (E-flat Clarinets)
- CL 1 (Clarinets)
- CL 2,3 (Clarinets)
- BS CL (Bass Clarinet)
- CA CL (Cello)
- BN 1,2 (Bassoons)
- CBN (Contrabassoon)
- S SX (Saxophones)
- A SX (Alto Saxophones)
- T SX (Tenor Saxophones)
- B SX (Baritone Saxophones)
- PC TP (Percussion/Tam-tam)
- TP 2,3 (Tom-toms)
- HN 1,3 (Horns)
- HN 2,4 (Horns)
- TN 1,2 (Tubas)
- B TN (Baritone)
- EUPH (Euphonium)
- TB (Tuba)
- CB (Cymbals)
- PF (Piano/Forte)
- HP (Harp)
- TIMP (Timpani)
- PRC 1-5 (Percussion/Cymbals)

The score features complex rhythmic patterns, including triplets and various time signatures (4/4, 3/4, 4/4). Dynamics range from *mp* (mezzo-piano) to *ff* (fortissimo). Performance instructions include *gliss.* (glissando), *arco, div. (a 2)* (arco, divided), *pizz.* (pizzicato), *(open)*, *(l.v.)* (lively), *(brittle)*, *(VIB w/bow)* (vibrato with bow), and *WATER GONG w/med. yarn*. The bottom of the page shows measure numbers 101, 102, 103, 104, 105, and 106.

Against the gusts of blank repose, a threshold that persists

← ♩ = ♩ → (♩ = 72)

← ♩ = ♩ → (♩ = 108)

This page contains the musical score for measures 107 through 112. The score is arranged in a standard orchestral layout with multiple staves for woodwinds, brass, strings, and percussion. The woodwind section includes Piccolo (PC), Flute 1 & 2 (FL 1,2), Oboe 1 & 2 (OB 1,2), English Horn (EH), Eb Clarinet (Eb CL), Clarinet 1 (CL 1), Clarinet 2 & 3 (CL 2,3), Bass Clarinet (BS CL), and Contrabass Clarinet (CA CL). The brass section includes Bassoon 1 & 2 (BN 1,2), Contrabassoon (CBN), Saxophone 1 (S SX), Saxophone 2 (A SX), Tenor Saxophone (T SX), and Baritone Saxophone (B SX). The string section includes Piccolo Trumpet (PC TP), Trumpet 2, 3 (TP 2,3), Horn 1, 3 (HN 1,3), Horn 2, 4 (HN 2,4), Trombone 1, 2 (TN 1,2), Bass Trombone (B TN), Euphonium (EUPH), and Tuba (TB). The percussion section includes Cymbal (CB), Piano (PF), Harp (HP), and five Percussion parts (PRC 1-5). The score features complex rhythmic patterns, including 4/4, 12/8, and 3/4 time signatures. Dynamics range from *p* to *ff*. Performance instructions include *pizz. (non div.)*, *f (non troppo)*, *f (brittle)*, *INSIDE w/fingertips*, *Sost.*, and *TAM TAM*. Measure numbers 107, 108, 109, 110, 111, and 112 are indicated at the bottom of the page.

Tempestuous ♩ = 120

H Suspended ♩ = 40

PC

FL 1,2

OB 1,2

EH

Eb CL

CL 1

CL 2,3

BS CL

CA CL

BN 1,2

CBN

S SX

A SX

T SX

B SX

PC TP

TP 2,3

HN 1,3

HN 2,4

TN 1,2

B TN

EUPH

TB

CB

PF

HP

TIMP

PRC 1

PRC 2

PRC 3

PRC 4

PRC 5

113

114

115

116

117

118

Musical score for orchestra and percussion, measures 119-123. The score is arranged in a standard orchestral layout with woodwinds, brass, strings, and percussion.

Woodwinds: Flute 1 & 2 (FL 1,2), Oboe 1 & 2 (OB 1,2), English Horn (EH), Eb Clarinet (Eb CL), Clarinet 1 (CL 1), Clarinet 2 & 3 (CL 2,3), Bass Clarinet (BS CL), Contrabass Clarinet (CA CL), Bassoon 1 & 2 (BN 1,2), Contrabassoon (CBN), Saxophone Soprano (S SX), Saxophone Alto (A SX), Saxophone Tenor (T SX), Saxophone Baritone (B SX).

Brass: Trumpet 1 & 2 (TN 1,2), Trumpet 3 & 4 (TN 3,4), Trombone 1 & 2 (EUPH), Trombone 3 (TB), Euphonium (EUPH), Tuba (TB).

Strings: Violin 1 & 2 (VL 1,2), Viola (VLA), Violoncello (VCL), Double Bass (DB).

Percussion: Percussion 1 (PRC 1), Percussion 2 (PRC 2), Percussion 3 (PRC 3), Percussion 4 (PRC 4), Percussion 5 (PRC 5), Timpani (TIMP).

Other: Piano (PF), Harp (HP).

Measure 119: Features a 4/2 time signature. Percussion includes Water Gong (w/med. yarn) and Glockenspiel (w/hard rubber). Dynamics range from *mf* to *n*. Includes a glissando for the tuba and a *mf* dynamic for the water gong.

Measure 120: Features a 3/2 time signature. Dynamics range from *p* to *mf*. Includes a *mf* dynamic for the water gong.

Measure 121: Features a 5/2 time signature. Dynamics range from *p* to *mp*. Includes a *mp* dynamic for the glockenspiel.

Measure 122: Features a 5/2 time signature. Dynamics range from *p* to *ff*. Includes a *ff* dynamic for the tuba and a *ff* dynamic for the trombone.

Measure 123: Features a 3/2 time signature. Dynamics range from *p* to *ff*. Includes a *ff* dynamic for the tuba and a *ff* dynamic for the trombone. Includes a *ff* dynamic for the water gong.

119

120

121

122

123

